

League Manager™

The fastest, easiest way to run your golf league



Overview

League Manager supports any type or size league - nine or eighteen hole leagues, individual or team leagues, (1 to 12 players per team), up to 100 teams, and up to 50 events for the season. Plus it can handle any number of leagues. League Manager pairs your golfers, builds the season schedule, calculates handicaps and points, and provides a wide range of reports to show standings, league results, and statistics. League Manager is extremely flexible - handicap and point calculation parameters can be customized to work the way your league plays. League Manager can even automatically post all of your league's information to the web, so league members can view league information at any time from any place.

*"We have been using League Manager for 5 years now and I think it's the BEST."
- John Clark*

F	S	Players	Hcp	ABS	Gross	Points	Total Points	vs Team	F	Opposing Player	Hcp	Gross	Points	vs B
1		Cornish and Cornish	9.00	78.00	20					Picorek and Riskey	5.17	49	2.50	
		A X Cornish, Dave	9.07	42	42	11.50	31.00			A Riskey, Steve	5.17	49	2.50	
		B Cornish, Jon	12.99	47	47	11.00	30.00			B Picorek, Ron	5.34	47	3.00	
2		Dragovich and Puckett	5.00	90.00	15					Trupkowski and Turner				
		A X Dragovich, Rodney	4.58	42	42	11.50	52.50			A Trupkowski, Tom	8.70	50	2.50	
		B X Puckett, Louise	9.10	52	53	9.50	25.50			B Turner, Ben	10.00	55	7.50	
3		Handhoff and Handhoff	5.00	94.00	18					Harris and Paul				
		A Handhoff, Jonathan	7.11	45	46	10.50	39.00			B Paul, Tom	11.30	57	3.50	
		B Handhoff, Dale	8.74	45	45	4.50	29.00			A Harris, Charles	11.31	46	9.50	
4		Smith and Anuska	5.00	65.50	17					Boyer and Boyer				
		A Smith, Jay	8.97	45	45	10.50	33.50			"Shoot Sub #1"	3.73	-		
		B X Anuska, Irap	10.79	48	48	10.50	26.00			B Boyer, Ron	7.28	51	3.00	
5		Brockway and Silous	5.00	110.50	16					Walters and Brown				
		A Brockway, Rich	3.86	37	38	10.00	42.50			A Walters, Mike	5.52	42	4.00	
		B X Silous, Terry	4.94	43	43	9.50	44.00			B Brown, Joe	7.08	48	7.50	
6		Harris and Jones	5.00	69.50	15					Pobuda and Visser				
		A Harris, Tom	3.03	44	45	3.50	26.50			A Pobuda, Bob	8.45	48	10.50	
7		Hanson and Dornhaug	5.00	101.50	14					Lutton and Page				
		A X Hanson, Mike	1.84	37	37	11.00	43.00			A Lutton, Jay	6.15	47	3.00	
		B X Dornhaug, Jim	5.24	39	39	11.50	40.50			B Page, Bob	7.95	49	2.50	
8		Whelan and Griffin	5.00	108.00	13					Woraman and Austin				

League Manager is easy to use, allowing you to spend more time playing golf than administering the league

Maintain League Information

- Complete golfer/team information, including: name, handicap, flight, scores, points, address, email, phone, ranking, and more.
- Any number of leagues/rosters can be created. Each league can have up to 6 divisions. A must for big leagues. Divisions can be "football" type divisions (inter-divisional play) or "baseball" type divisions (no inter-divisional play).
- Allows play on any number of courses/tees in each event.
- Up to 100 "real" substitutes per league. Plus additional "ghost" substitutes can be used to handle any situation.
- Stores all itemized information for each event. Past events can be reviewed and changed at any time.
- Mixed (men/ladies) leagues are supported. League Manager automatically takes into account the difference in tees.
- Option to track putts, greens, fairways, earnings, prize money, or ANY info your league needs to track.

Calculate League Statistics

Handicaps

- Set up your own handicapping system (any formula is possible), or use the USGA style system. No need to change your league handicapping.
- Handicaps can be calculated to whole or decimal numbers.
- If you want to assign a golfer a different handicap than the auto calculation, you can enter and LOCK it for that event.
- Option to round or truncate handicaps.
- Set up your own hole reduction system to calculate Adjusted Gross Scores. Set a maximum score allowed on par 3s, 4s and 5s. Or you can use the USGA ESC (Equitable Stroke Control), or no stroke control. There is also an option to use the OLD USGA ESC (Pre-1993).

Points

- Option to enter scorecards. League Manager automatically calculates points, gross, net, adjusted gross, handicap, par, birdies, etc.
- Scorecards can be entered hole-by-hole or totals only.
- Set up your own system for calculating points. League Manager automatically awards points - hole-by-hole, Medal, Match, Best Ball, Stableford, Ranking, Cross Match, Aggregate, etc. Any formula and combination of these is possible!
- Calculates total points, bogeys, pars, birdies, eagles, putts, low net, low gross, high points, best hole, skins, ringers, etc.
- Tracks totals, averages, lows and highs on any statistic.
- Calculates total team points for the season. Breaks down regular, substitute, team, adjusted, and dropped points.
- Allows you to drop high or low score(s).

"I am the secretary of our Golf League and have looked at every possible league management software package. There is absolutely no better combination of features in any league management system. This software is worth every penny."
 - Fred Friton, NES Golf League

Pos	Flight	Player	Avg Gross	Low Gross	High Gross	# Events Played
1	A	Walsh, Sheila	43.125	37	47	8
2	A	Biehl, Lois	43.250	39	48	8
3	A	Gauger, Pat	44.500	42	48	8
4	A	Stevens, Joan	45.900	42	49	10
5	A	Clausen, Cindy	47.167	45	50	8
6	A	Heisler, Dottie	47.875	45	54	8
7	A	Glaser, Mary	48.143	45	51	7
8	A	Sweeney, Jean	49.600	45	53	5
9	A	Don, Anna Mae	50.333	48	55	6
10	A	Reigner, June	51.000	47	61	7
1	B	Colatosti, Ellie	49.500	42	55	8
2	B	Mecherly, Dottie	49.571	42	56	7
3	B	Koch, Jean	49.800	47	54	5
3	B	Rhoades, Carole	49.800	47	54	5
5	B	Coker, Kathy	50.600	45	56	5
6	B	Rohrbach, Sis	51.200	46	60	5
7	B	Hoffman, Shirley	52.429	48	58	7
7	B	Bartman, Joan	52.429	47	58	7
9	B	Boyles, Marcia	53.125	43	67	8
10	B	Lewy, Dons	53.286	49	57	7
1	C	Bealer, Jan	47.600	44	51	5

Sample individual results report. See and post the results of each event easily.

Hole	1	2	3	4	5	6	7	8	9	xxx	36	xxx	F10-Recalculate											
Men's Par	4	4	3	4	4	3	5	4	5	4	5	4	36											
Men's Hole Handicap	6	2	8	5	3	9	1	7	4	4	4	4	36											
Player's Name													Putts	Scr	Hcp	Net	Points							
02 DAUGHERTY, ED	7	7	4	4	5	4	7	4	5	5	6	19	56	17	39	4.50								
02 COWAN, BRIAN	7	9	6	5	5	6	7	5	6	6	6	19	56	17	39	2.50								
05 GUILLEY, MIKE	5	6	6	5	4	6	5	4	6	6	5	16	47	10	37	9.50								
05 PAPP, CHRIS	6	6	3	4	4	6	6	5	5	5	5	45	13	32	32	11.50								
Team Points Scored													Match	Handicap	Net	Points								
Team # 02													1.0	1.0	0.5	1.5	0.5	1.0	1.5	xxxxx	18.00	29.00		
Team # 05													2.0	2.0	1.0	1.0	1.5	0.5	1.5	1.0	0.5	xxxxx	18.00	29.00
Ladies' Par	4	4	3	4	4	3	5	4	5	4	5	36	36											
Ladies' Hole Handicap	6	2	8	5	3	9	1	7	4	4	4	36	36											

Sample scorecard. Enter and maintain scorecards quickly and easily.

Event	Date	Match 1	Match 2	Match 3	Match 4	Match 5	Match 6	Match 7	Match 8	Match 9	Match 10
[1]	04/7/04	1-15	2-14	3-13	4-12	5-11	6-10	7-9	8-20	9-19	10-18
2	04/24/04	3-14	1-16	2-15	6-11	4-13	5-12	17-19	7-10	8-9	18-20
3	05/01/04	2-16	3-15	1-17	5-13	6-12	4-14	8-10	9-20	7-11	18-19
4	05/08/04	6-13	7-12	5-14	1-18	2-17	3-16	4-15	19-20	9-10	8-11
5	05/15/04	8-12	9-11	4-16	3-17	1-19	2-18	6-14	5-15	10-20	7-13
6	05/22/04	4-17	8-13	7-14	2-19	3-18	1-20	5-16	10-11	6-15	9-12
7	05/29/04	No Golf									
8	06/05/04	3-19	4-18	10-12	7-15	8-14	9-13	1-2	6-16	5-17	11-20
9	06/12/04	No Golf									
10	06/19/04	2-20	4-19	5-18	8-15	7-16	6-17	10-13	1-3	11-12	9-14
11	06/26/04	5-19	6-18	9-16	10-14	9-15	7-17	11-13	12-20	1-4	2-3
12	07/03/04	Fun Night									
13	07/10/04	7-18	8-17	6-19	9-16	10-15	11-14	3-20	2-4	10-13	1-5
14	07/17/04	9-17	2-5	11-15	10-16	13-20	7-19	8-18	12-14	3-4	1-6
15	07/24/04	1-7	3-5	4-20	13-14	11-16	8-19	12-15	9-18	2-6	10-17
16	07/31/04	10-18	9-19	1-8	2-7	3-6	12-16	14-20	11-17	13-15	4-5
17	08/07/04	4-6	12-17	3-7	1-9	2-8	5-20	11-18	13-16	14-15	10-19

Sample league schedule. Build the schedule any way you want and print or post it for everyone to see.

Points continued

- Golfers can track: player versus player, team vs. team, against the field, against the course, or any combination of these.
- Any points a substitute wins can be awarded to the sub him/herself, or to the golfer for whom he/she is substituting.
- Option to override points. If you have a special circumstance where you need to alter the amount of points a golfer or team receives for a certain event, you can override the points awarded at any time.

Pairings

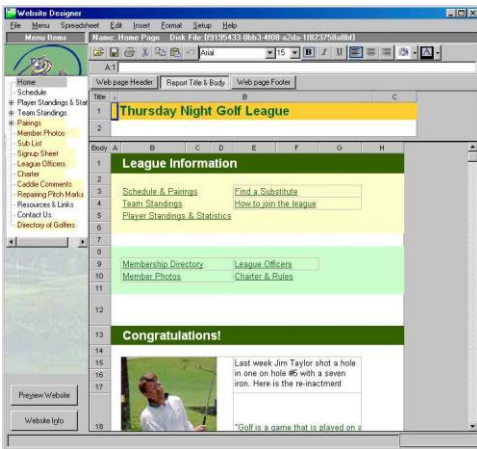
- Automatically or manually build the season schedule, pairing teams and golfers for each event. Option to customize league schedule.
- Handles position nights, tournaments, rainouts, etc.
- The schedule sets the courses to be played for the entire season automatically. Option to manually set courses.
- Optional tee-times or shot-gun start. Scheduling assures each team has a different tee-time or start hole each week. Option to display tee-times/start holes on scorecards and other relevant reports.
- Course rotation option. For leagues that play front/back each week, scheduling guarantees each team will play the front/back an equal number of times.
- Cross pairing option. League Manager can automatically pair golfers across flights. For example, many leagues play A vs. A, B vs. B, etc. when two teams are matched to play. The second time the two teams are matched, League Manager can automatically pair the golfers A vs. B, B vs. A, etc. This works for 2 to 12 person teams.
- Pair opposing teams as two-, four-, six-, or even eight-somes.
- Automatically flights players by handicap or points won.
- League Manager allows for any number of split seasons (1st half winner, 2nd half winner, 1st, 2nd, 3rd, 4th quarter winner, etc.).

View and Print a Wide Range of Reports

- Many types of roster, individual, team, and custom reports
- **Score Cards** - Print a scorecard for each team or match. Shows course, team, and golfer information. Handicap and strokes are marked on each hole. Print on pre-printed scorecards or blank paper.
- **Team Pairing** - Matches competing teams and golfers.
- **Event Results** - Team/golfer's scores, points, handicap, standings, and many more stats. Five report styles available.
- **Golfer's Rank/Honors** - Best scores, points, pars, birdies, putts, etc. - for event, season, or average.
- **Skins Report** - (Both gross or net, individual or team)
- **Ringer Report** - Takes the best score on each hole for the season and builds a golfer's best possible round. Golfers love this report, it makes them look like a pro. Both gross or net.
- **Golfer's Itemized Information** - All golfer's information, with each event itemized.
- **Course results** - Interesting statistics about each course your league plays.
- **Golfer Roster** - League directory, checklist, directory with addresses

"Our league has used League Manager for three years and it has made our league stats so much easier and quicker to calculate. The ability to view the standings and stats online is the most popular aspect of the product with our league members. It's really a lot of fun to use and the entire league membership follows the weekly updates religiously. I hear about it instantly if I'm late putting the week's results online."

- Patrick Campbell



Website Designer allows you to build a website for your league that keeps your members informed and interested.



Run your group. Save time.
Be a hero.

For more information on League Manager and our other products, please visit our website at

www.GolfSoftware.com

To place an order, call
1-800-697-9989 (USA only)

Copyright © 20XX, GolfSoftware.com. All rights reserved.

Reports continued

- **League Schedule** - Team/golfer pairings for the season.
- Address labels for laser or inkjet printers.
- Plus you can also create your own **custom** reports! Display any item, in any column, sorted in any fashion. Any number of report layouts can be created and saved for later use.
- Reports can be customized to extract only the information you need. The layout of each report is controlled by you -- Margins, page length, page width, report header, report title, report date, double space, and more. Reports can be printed in any size font or style. Print reports in portrait or landscape mode.
- League Manager lets you see exactly how your report will appear on paper. Preview reports on the screen. Reports can be printed to your printer, saved to disk, or exported to other programs. A built-in editor lets you edit reports or add comments at any time.
- Export into HTML file format or directly to Microsoft Excel's native format. HTML is the universal format for viewing on the web or transferring reports and data from one program to another. This means you can view/import into any program that supports HTML without losing any formatting.
- You can publish reports and lists directly to your website.
- Pass reports to other league members. As long as they have a web browser, MS Word, MS Excel, or any program that reads HTML, they can view the report. Most programs now support HTML.

Post Information onto Your Own Website

League Manager's built in Website Designer provides a turnkey solution for placing all your organization's pertinent information on the web. There are no usernames or passwords to remember, no special software to load, no server to set up. Publishing your league's website is easy and completely automatic.

Put any information that you would usually print onto your own league's website. The players love it because all of the league's information is accessible on the Internet. All members have online access to reports, league standings, individual standings, game results, schedules, tee times, next round info, handicapping reports, league rules & documents, photos, emails, announcements, etc. Post whatever information you wish on your website.

Note: You are NOT required to be connected to the Internet to run League Manager. An Internet connection is only required for those leagues that choose to use the Website Designer option.

Other Features

- Full screen input. (Just like filling out a form!)
- Friendly, easy-to-use program.
- Ability to roll over scores from the previous season.
- **Plus much more! If you don't think League Manager will award points or handicap the way your league does, give us a call.**